

INNOVATION  
SLITTING TECH  
POSITIONING  
PRECISION



# Expanding Chucks

**Axial \* Torque Activated  
Pneumatic \* Air Powered**



**For continuous-duty shaftless  
applications in corrugating,  
sheeting, paper finishing**

**Industry:** corrugated, paper & film converting

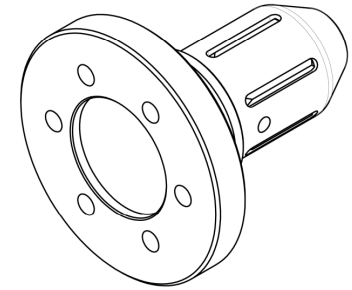
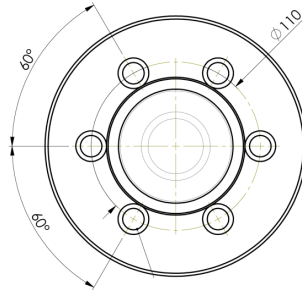
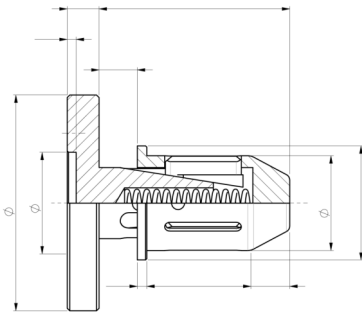
**Applications:** shaftless unwinds

Heavy-duty mechanical chuck that uses machine arms side pressure to expand and grip the core. As the core sidewall presses against the stop flange on the outer housing of the chuck, the outer housing moves back while the lugs expand.



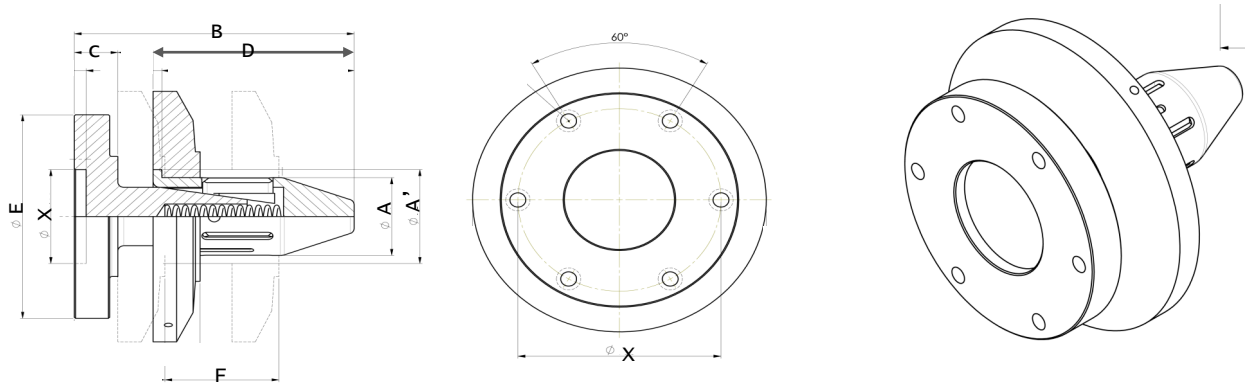
## Single Diameter

## Axial Expansion—Model ACH



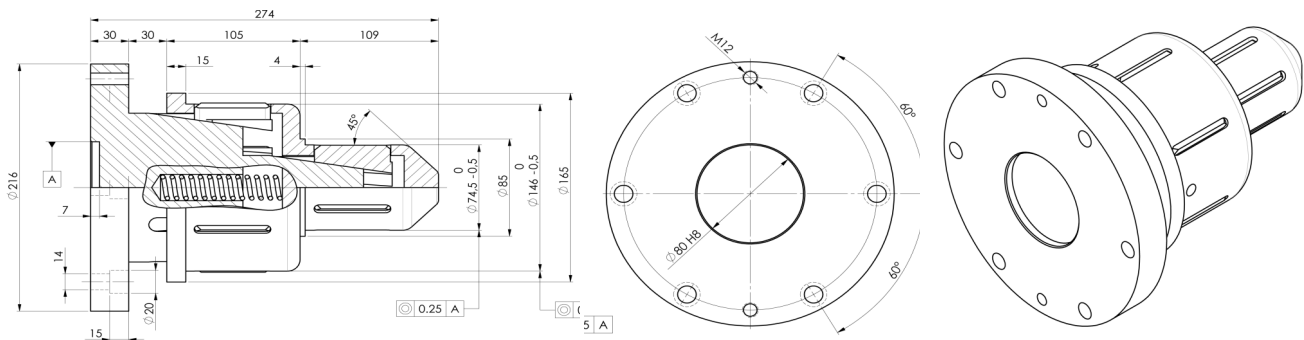
Code	Core I.D.	A mm	B mm	C mm	D mm	E mm	Load (Lbs) max	Torque (Lb-in) max	X mm
ACH.01.030.01	74/76mm	74,5	150	25	120	168	3000	2300	Upon request
ACH.01.040.01	100mm	98	150	25	120	198	6500	9750	
ACH.01.050.01	127mm	125	135	30	105	198	11000	22130	
ACH.01.060.01	150mm	148	135	30	105	216	17000	26550	
ACH.01.100.01	245mm	242	135	30	105	370	22000	106210	
ACH.01.120.01	300mm	297	135	30	105	418	34000	160000	

# AXIAL EXPANSION—Model ACH Flange Ejector PAGE 3



Code	Core I.D.	A mm	B mm	C mm	D mm	E mm	F mm	Load (Lbs) max	Torque (Lb-in) max	X mm
ACH.01.030.02	74/76mm	74,5	238	30	171	195	97	3000	2200	Upon request
ACH.01.040.02	100mm	98	238	30	171	195	97	6000	10000	

# AXIAL EXPANSION—Model ACH Dual Diameter



Code	Core I.D.	A'/A'' mm	B mm	C mm	D mm	E mm	Load (Lbs) max	Torque (lb-in) max	X mm
ACH.02.040.01	3"/4"	74,5/98	235	25	80	100	1700/6000	2200/10000	Upon request
ACH.02.060.01	3"/6"	74,5/14	274	30	105	216	3500/17000	2200/26000	

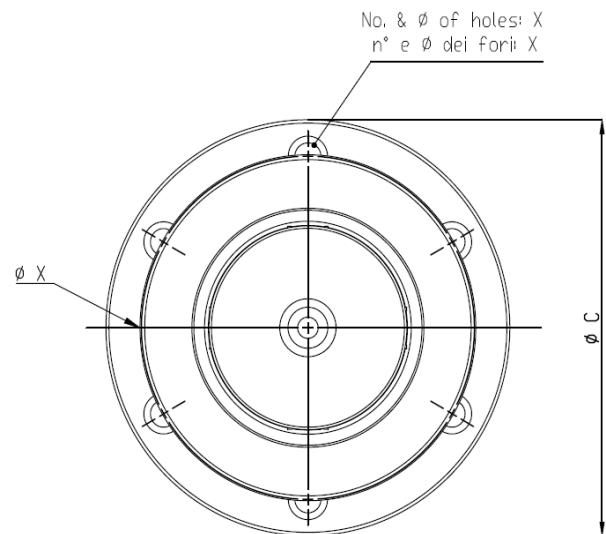
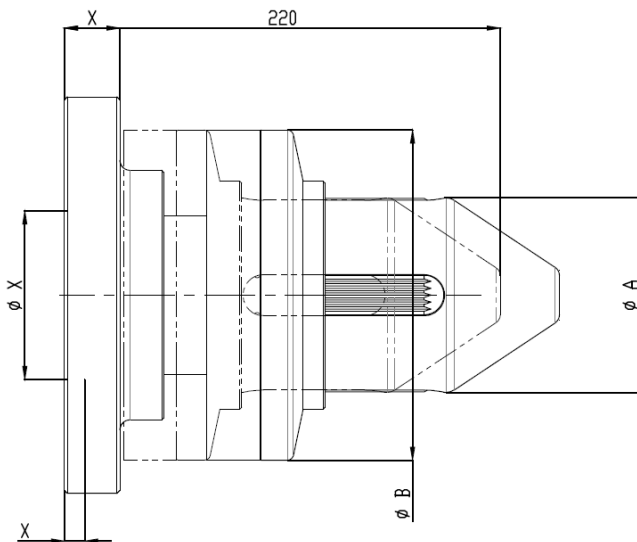
**Industry:** corrugated

**Application:** shaftless unwinds

Our axial thrust “Sure-Chuck” (model “ASC”) is the top of our core chuck production range: It automatically resolves any reel clamping problems. Available in 4 inch only.



## Sure Chuck—Model ASC Single Diameter



Code	Core I.D.	A mm	B mm	C mm	Load (Lbs) max	Torque (Lb-in) max	X mm
ASC.01.040.0 2	100mm	98	167	216	6000	10000	Upon request

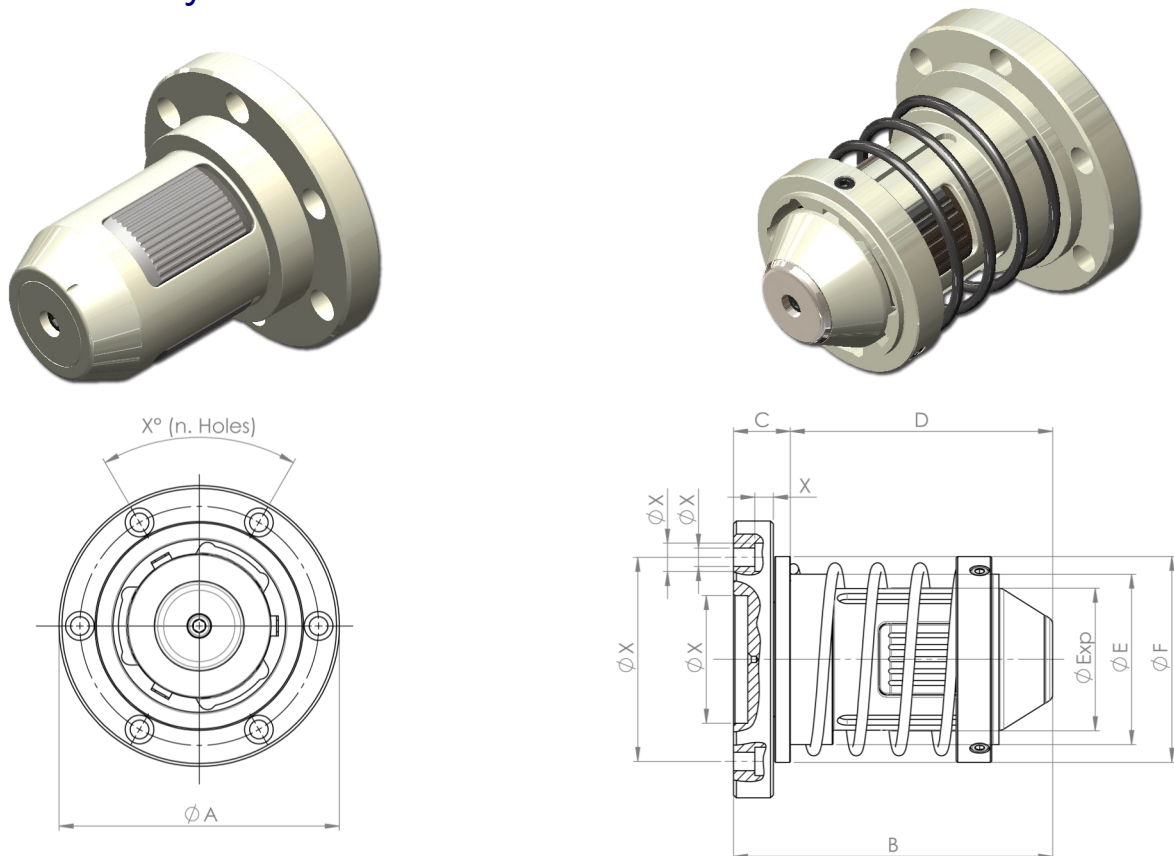
**Industry: corrugated, paper & film converting**

**Applications: shaftless unwind**

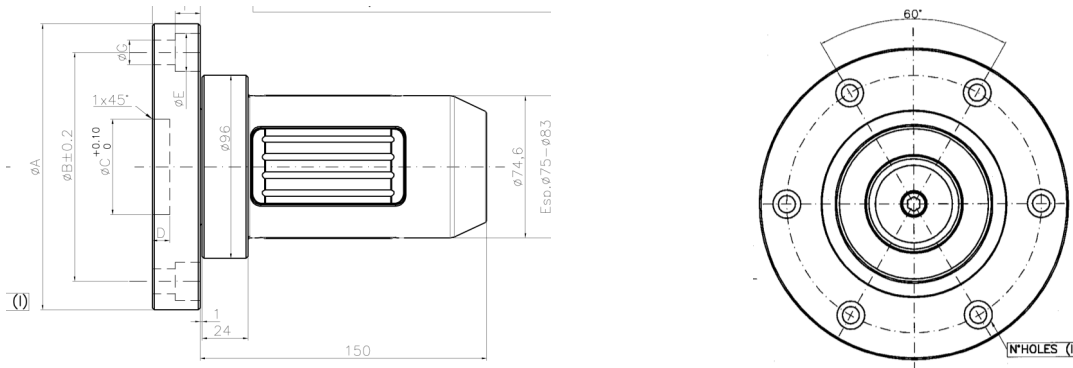
Our torque-activated expanding core chucks are equipped with sealed bearings and expansion jaws that expand using low torque. Automatic locking in both rotation directions. They can be used with cardboard, PVC or steel cores.

The standard version (Model AROT) is available with spring loaded core ejector or with flange ejector.

The standard version (model AROT) is available for 3” to 6” cores. The modular series (model TRM) is available for 3” to 12” cores. The simple design with no roller pins or springs will insure no jamming when conditions are not perfect, creating reliability and durability.

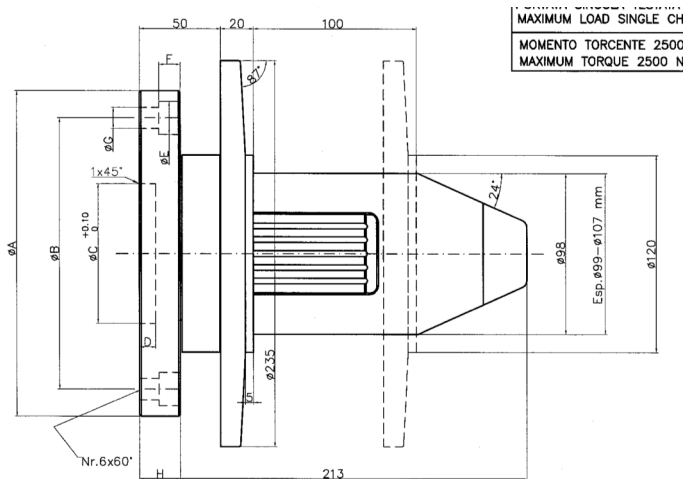


# Torque Activated Single Diameter Model AR0T



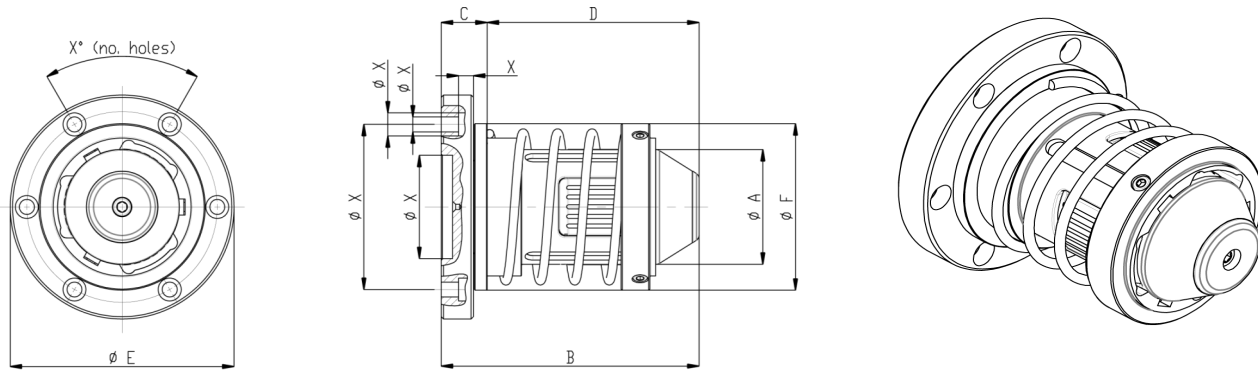
Code	Core I.D.	A mm	B mm	C mm	D mm	Expansion (mm)	Load (Lbs) max	Torque (Lb-in) max	X mm
AROT3	76mm	74,6	150	25	178	75-84	4000	10000	Upon request
AROT98	100mm	98	150	25	196	98,5-107	8000	22000	
AROT100	102mm	100	150	25	196	101,5-109	8000	22000	
AROT148	150mm	148	150	25	216	148,5-158	25000	44000	
AROT150	152mm	150	150	25	216	150,5-160	25000	44000	

# Torque Activated Flange Ejector Model AR0T



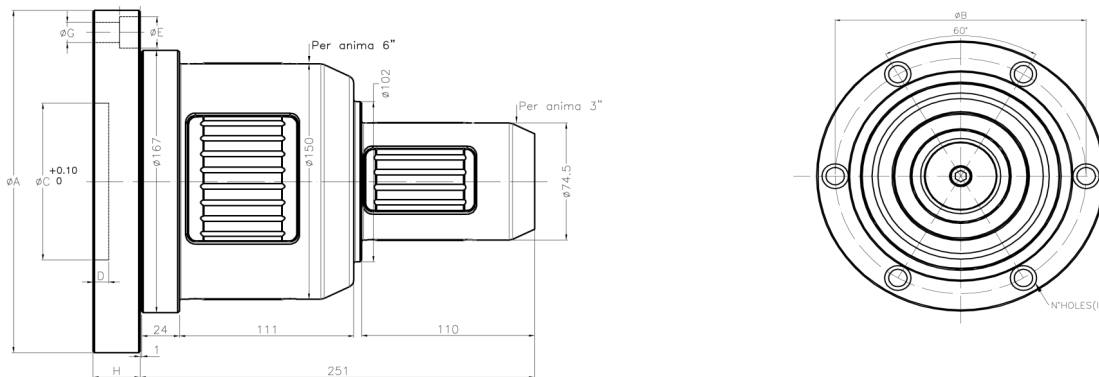
Code	Core I.D.	A mm	B mm	C mm	D mm	E mm	F mm	Load (Lbs) max	Torque (Lb-in) max	X mm
AROT3FL	76mm	74,6	233	30	180	100	20	4000	10000	Upon request
AROT98FL	100mm	98	243	30	195	100	20	8000	22000	
AROT100FL	102mm	100	243	30	195	100	20	8000	22000	

# Spring Loaded Core Ejector Model AROT



Code	Core I.D.	A mm	B mm	C mm	D mm	E mm	F mm	Expansion (mm)	Load (Lbs) max	Torque (Lb-in) max	X mm
AROT98ML	100mm	98	225	40	185	195	145	98,5-104,5	8000	22000	Upon request
AROT100ML	102mm	100	225	40	185	195	145	100,5-106	8000	22000	

# Dual Diameter Model AROT



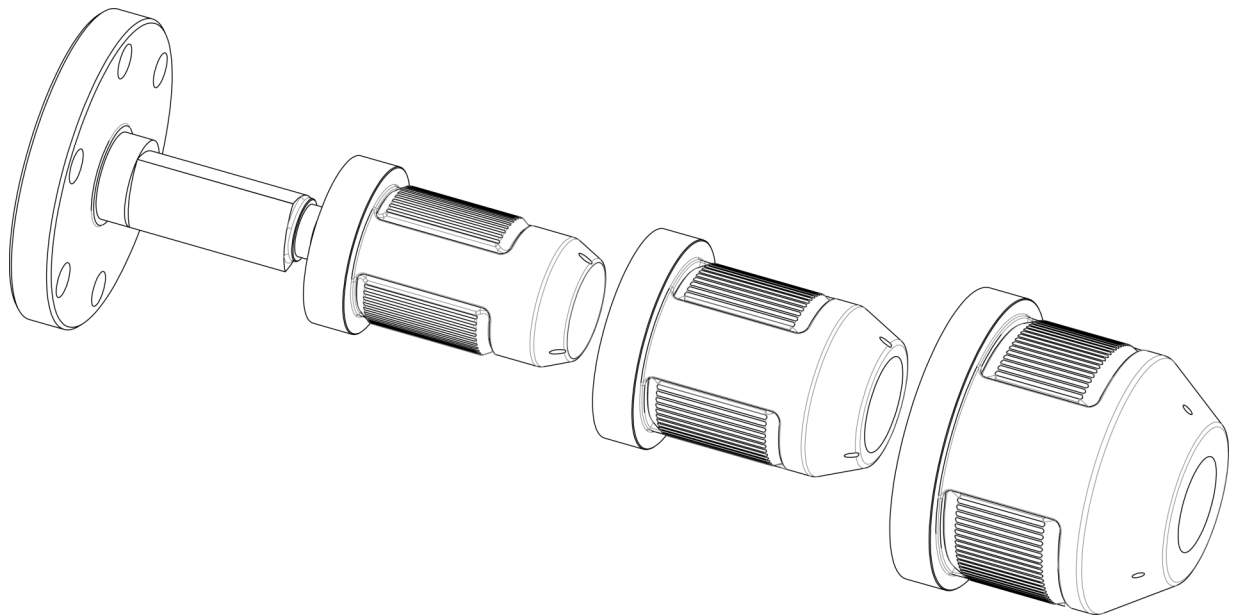
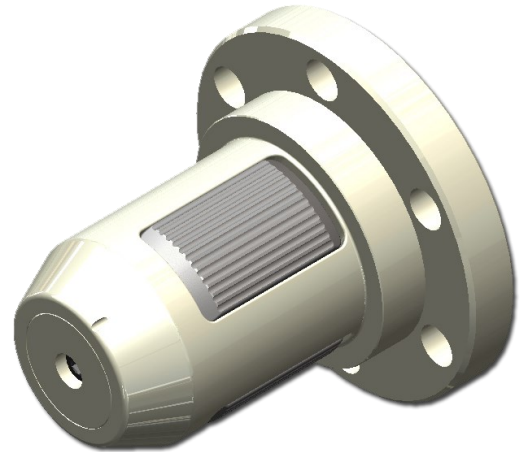
Code	Core I.D.	A'/A'' mm	B mm	C mm	D mm	Expansion (mm)	Load (Lbs) max	Torque (Lb-in) max	X mm
AROT3/4	3"/4"	74,6/100	250	25	198	84/109	4000/8000	10000/2200	Upon request
AROT3/6	3"/6"	74,6/150	250	25	216	84/159	6000/10000	10000/4400	
AROT4/6	4"/6"	98/150	250	25	216	107/159	8000/10000	22000/4400	



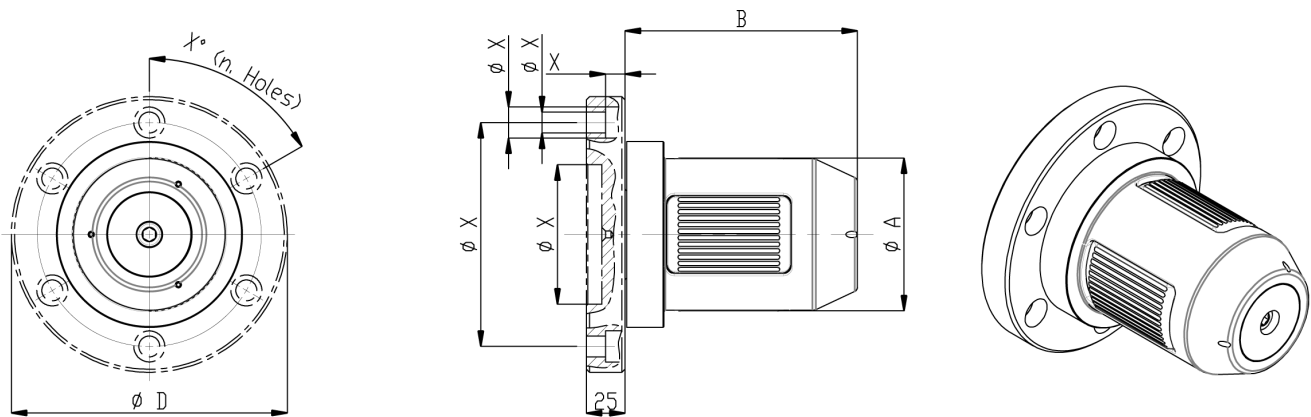
For those that have the need to run different core sizes.  
The **modular series** torque-activated chuck allows for quick changes in core diameters.

With the same hub, which always remains mounted on your machine, and a simple screw it is possible to replace the adapters based on your specific needs.

Our product range includes 3 hubs that differ from dimension, thus covering internal diameter cores from 70mm to 302mm.







Code	A mm	B mm	C mm	D mm	Expansion (mm)	Load (Lbs) max	Torque (Lb-in) max	X mm
TRM.3.68	68,5	150	25	178	68-75,5	4000	10000	Upon request
TRM.3.74	74	150	25	178	74-81,5	4000	10000	
TRM.3.98	98	150	25	178	98-106,5	4000	10000	
TRM.3.148	148	150	25	178	148-156,5	4000	10000	

Code	A mm	B mm	C mm	D mm	Expansion (mm)	Load (Lbs) max	Torque (Lb-in) max	X mm
TRM.4.98	98	150	26	196	98-107	8000	22000	Upon request
TRM.4.148	148	150	26	196	148-156	8000	22000	
TRM.4.198	198	150	26	196	198-206	8000	22000	
TRM.4.248	248	150	26	196	248-256	8000	22000	
TRM.4.297	297	150	26	196	297-305	8000	22000	

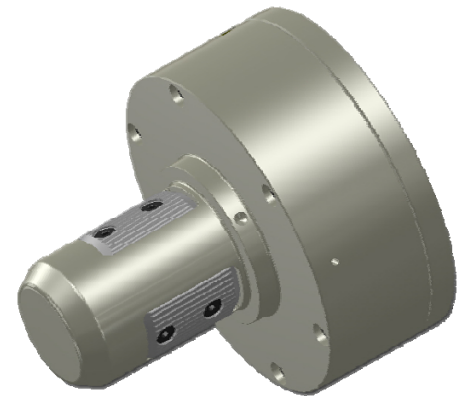
Code	A mm	B mm	C mm	D mm	Expansion (mm)	Load (Lbs) max	Torque (Lb-in) max	X mm
TRM.6.148	148	150	30	216	148-156,5	25000	44000	Upon request
TRM.6.198	198	150	30	216	198-206,5	25000	44000	
TRM.6.248	248	150	30	216	248-256	25000	44000	
TRM.6.297	297	150	30	216	297-305,5	25000	44000	

***Industry: paper & film converting***

***Application: shaftless unwinds and rewinds***

Our Air Powered Lug chucks ensure durability, quality and toughness. Due to their high versatility they can be used in different industries including the production of corrugated cardboard, paper and film converting, nonwoven production and converting, medical, labelling on unwinders, and on shaftless slitter rewinders.

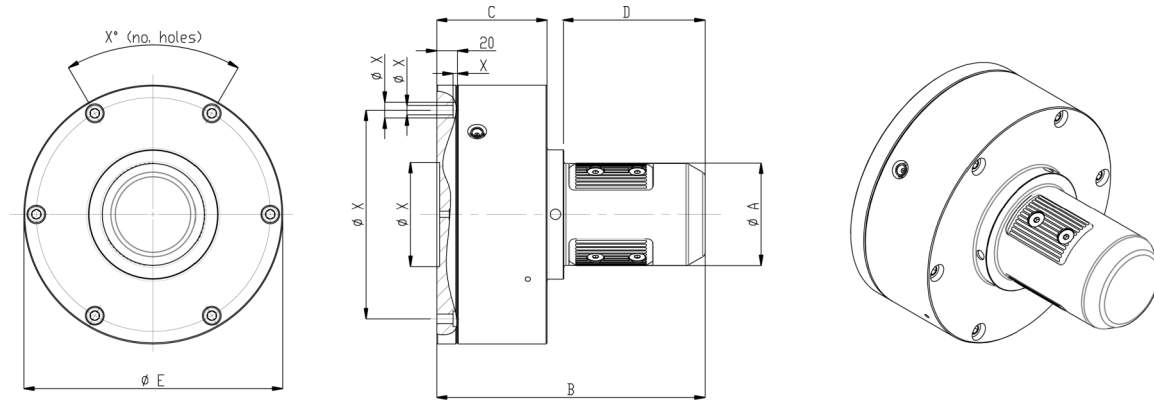
The dimensions are reduced to the minimum to maintain the maximum distances between the arms of the machine and to guarantee versatility with different work and reel dimensions.



Adaptable to different diameters using their aluminum adapters, they provide hygiene and durability.

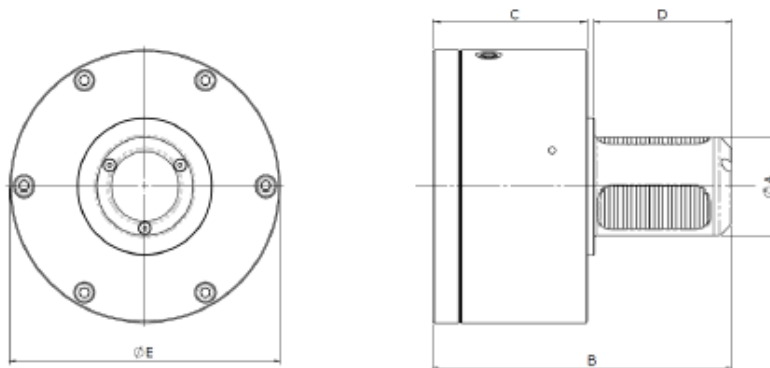
***These can be provided in two different versions:***

- *“positive” version: expansion with air and automatic release with springs*
- *“negative” version: expansion by default with springs and release with air*



Code	Core I.D.	A mm	B mm	C mm	D mm	E mm	Expansion (mm)	Load (Lbs) max	Torque (Lb-in) max	X mm
PNM.2.68-76	70-76mm	68,5	235	110	120	192	68,5-81	2000	3500	Upon request
PNM.2.68	70mm	68	215	100	110	192	68,5-78	2000	3500	
PNM.2.74	76mm	74	215	100	110	192	74,5-83,8	3000	5500	
PNM.2.98	100mm	98	215	100	110	192	98,5-107,5	4000	8000	
PNM.2.118	120mm	118	215	100	110	192	118,5-127,5	5000	12500	
PNM.2.123	125mm	123	215	100	110	192	123,5-132,5	7000	20000	
PNM.2.148	150/152mm	148	215	100	110	192	148,5-157	9000	40000	

### Air Powered Lug Chuck for Reel handling and Special Applications

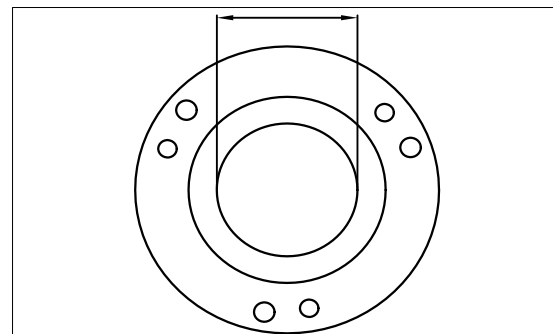
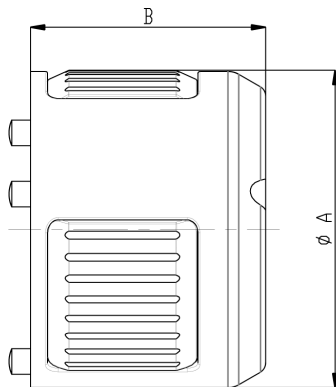
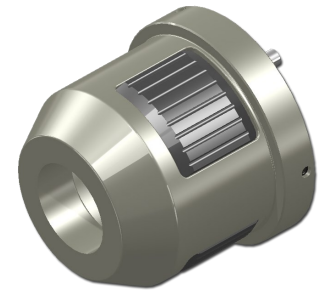


Code	Core I.D.	A mm	B mm	C mm	D mm	E mm	Expansion (mm)	Load (Lbs) max	Torque (Lb-in) max	X mm
PNM.2.68-76C	70-76mm	68,5	212,5	110	97,5	192	68,5-81	2000	3500	Upon request

### **Applications: air powered core chucks (model PNM)**

Our air powered lug chucks can be equipped with **aluminum adapters** for easy size changes from 3" to 12" diameters.

Light, versatile and durable accessory for your production.



Code	A mm	B mm	C mm	Expansion (mm)
ADPNM.2.68_76-148	148	115	68,5	148,5-157,5
ADPNM.2.68-148	148	115	68,5	148,5-157,5
ADPNM.2.74-148	148	115	74	148,5-157,5
ADPNM.2.98-198	198	135	98	198,5-207,5
ADPNM.2.98-248	248	135	98	248,5-257,5
ADPNM.2.148-198	198	135	148	198,5-207,5
ADPNM.2.148-248	248	135	148	248,5-257,5
ADPNM.2.148-297	297	135	148	297,5-306,5